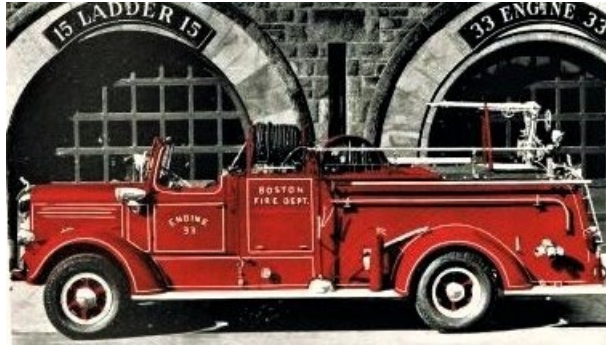


Box 52 Association



The Line Box



I.F.B.A. Member club since 1955!

Vol. 20 No. 4 Part Two



Boston Engine Company 14 a 2024 Emergency-One. See the Apparatus Update column for more information.
Photo by Member Michael Boynton



**Chelsea Box 5-465
320 Revere Beach Parkway
Thursday May 30th, 2024**

On May 30th, 2024 Chelsea and its mutual aid partners faced a day long vacant commercial building fire. The building was the former home of Russo Tuxedo and Formal Wear. It was made up of a 2 and 3 story interconnected buildings that was nearly 12,600 square feet that fronted on Revere Beach Parkway, Adams Street and Garfield Avenue. Nearly all of the building was vacant with only a small area being rented by a church group.

A fire somehow started in the basement and burned undetected for a while. At 1003 Hours Chelsea Public Safety Dispatch received a call for an alarm activation. Engine 1 and Ladder 2 were dispatched to investigate. Upon arrival Engine 1 reported smoke showing and to strike the box. Box 465 was transmitted and the remainder of the first alarm was dispatched: Engine 3, Tower 1 and the OIC of the shift in C3.

As C3 was approaching the scene he reported that he had heavy smoke showing from a distance and ordered the Working fire at 1006 hours.

Engine 1 was preparing to get their line into the building and Ladder 2 was busy opening up. C3 arrived and found that the building was fully involved and immediately ordered a second alarm at 1009 hours and ordered Tower 1 to set up on the Parkway side of the building. He also advised that he was setting up the Command Post on Adams Street. Chelsea H1 the safety officer reported to command that he could hear the roof going. The roof was ordered evacuated immediately. Several of the first and second alarm companies were ordered to get their Blitz guns into operation. A third alarm was ordered at 1024 hours by C3. Five minutes later with conditions deteriorating rapidly the order to evacuate the building was given at 1029 hours with orders to commence an immediate PAR.



Photo courtesy of Boston 10 News

C1 Chief of Department John Quatteri arrived on scene at the same time and ordered that a fourth alarm be transmitted and that he was assuming Parkway command and C3 was now operations. At 1051 hours H1 advised that a collapse zone should be set up around the entire structure. At 1056 hours Command gave a progress report that he had "heavy fire conditions in an attached two and three story interconnected building and that the fire was "doubtful will hold".

At 1106 hours a fifth alarm was ordered, ladder companies were reporting that large areas of the roof were in and fire was venting in most of the two story section and was also breaking through around the HVAC unit on the other side of the roof. Another progress report was given at 1120 that "still heavy fire conditions five ladder pipes were in operation and 3 more were getting into action. Numerous Blitz guns were also in use and the fire remains doubtful".



Photo courtesy of Boston Herald. Photo by D. Preston

About 1130 hours all lines were ordered shut down with exception of one Blitz gun protecting an exposure. During this time. The following was reported to Command: large area of roof has collapsed, heavy smoke pushing around the door that Engine 1 entered through and smoke was pushing up from the basement. A crack in the wall was found to run from the first floor all the way up to the third floor, second floor roof had a large collapse. Medford Ladder 1 reported heavy fire coming from the third floor roof. All lines were re-charged and the attack continued.

Progress report at 1203 Command reported "heavy fire throughout the building, all companies still working, doubtful will hold."

Chelsea Rescue 1 requested orders from Command and they were ordered to the fire and report to the Command Post on arrival.

The next progress report at 1251 reported "conditions remain unchanged, chasing heavy fire through the building, exterior attack, all companies working.

The slug fest continued all afternoon and just about 1500 hrs. Command reported "fire knocked down, all companies working, exterior attack.

The cause of the fire is under investigation.



Photo courtesy of Boston 10 News



Photo courtesy of the Boston Herald, photo by M. Garfinkle

B

Time	Alarm	Engines	Ladders	Chiefs/Special	Comments
1003	Still	E1	L2		
1005	465	E3	Twr. 1	C3	Orders of Engine 1
1006	W.F.	E2	Rev. L2 RIT	H1	Orders of C3
1009	2-465*	Rev. E4, Bos. E5, Som. E2 MassPort E1 RIT	Eve. L1	Bos Som. C3	Orders of C3
1024	3-465	Eve. E1, Med. E4, Wint. E1	Bos. L21 Med. L1		Orders of C3
1029	4-465	Lynn E9, Sau, E1, Mal. E3 Mel. E3	Som	C1	Orders of C1
1106	5-465	Camb. E5, Bel. E2, Bos	Mal L3	Camb Sq. Camb Div 2	Orders of C1
1213				R1	To the fire



San Francisco Hose Tender No. 1

Ever since the great earth quake of April 18th, 1906 the SFFD has looked for ways to have water available for firefighting when the municipal water mains are damaged or broken. Multiple solutions and procedures have been put in place and have been used effectively in the quakes since 1906.

One of the most successful of these has been the auxiliary water supply system. This system is made up of a 10.5 million gallon reservoir and several gravity feed tanks holding one million gallons. These feed special high-pressure hydrants equipped with three 3 ½ inch outlets. The Shops then made up tenders to carry 3 ½ inch hose loads.

In late 2023 Rosenbauer delivered to the City a new Hose Tender. This unique rig is equipped with a 5,750 GPM pump with four each inlets and outlets sized at 8 inches. It also carries a 3,000 GPM submersible pump all fittings and suction devices are located at the rear of the rig, the deck gun is a Task Force Tips Tsunami model which can deliver 8, 000 GPM and can be remotely operated.

The rig is based on the Rosenbauer Commander model. It carries 8 lengths of hard suction for drafting operations with the submersible pump. Also carried is 6,000 feet of 5 inch hose, 200 feet of 8 inch hose. All hose is equipped with National Standard threads. The rig will be housed at Station 18 with Engine 18, Truck 18, Surf Rescue 18 located at 1935 32nd Avenue. The station is headquarters for both the 2nd Division and the 8th Battalion.





1912-2024

BOX 52 ASSOCIATION

Ham & Bean Supper
Erie Fire Association No. 4 Hall
474 North Street
Georgetown, MA. 01833
Friday, May 17, 2024
6:00 PM Dinner

\$15.00 PER PERSON

ADMIT ONE

NO. 041

Another successful Ham & Bean Supper was held on May 17th. It was enjoyed by all. Secretary Jeff Brown sent along these photos of the event.



Kitchen crew under head chef Frank Barry make preparations to serve the supper.



Catching up.



President Kass presents guest speaker, member James Peruta with his thank you certificate.



APPARATUS UPDATE

By member Michael Boynton

All photos by the author

The rigs keep rolling in to Boston, Metro and beyond as we approach the second half of 2024. Here are a few of the deliveries this spring and early summer.

METRO-FIRE



Arlington Engine 2 2024 Emergency-One Typhoon 1500.530.



Boston has taken delivery of three additional Emergency-One Typhoon model pumps. Each is equipped with a 1,250 gpm pump/560 gallon tank and equipped with 30 gallons of Class A Foam. The new pumps have been assigned to Engine Companies 14, 33, and 37. This makes the entire frontline fleet of Boston pumps the same.



Cambridge Engine Company 2



And Cambridge Engine 5 both are 2024 Pierce Enforcer models equipped with a 1250 pump and 500 gallon tank. All front line pumps and spares are Pierce built, along with all their ladder companies!



Lexington Engine 4 assigned to East Lexington is a 2024 Emergency-One Typhoon model with a 1250 gpm pump with a 500 gallon tank and 30 gallons of Class A Foam. Another Departments whose frontline and spare pumps and the aerial ladder are all Emergency-Ones.



Randolph Squad 2 2023 Dodge Ram 5500/BRAT 4x4 250/300/20 gallons of foam.



Stoneham Engine 4 2023 Seagrave Marauder 1500/750. Stoneham is another Department with all front line engines being Seagraves.



Weston Squad 1 2024 Ford F-550/Spencer 4x4 Technical Rescue & Air Supply Unit.

Out of Fire District 13



Dighton Engine 3 2024 KME Predator model 1500/1000/ 30 gallons Class A foam. All three pumps and the rescue are built by KME.



Dracut Squad 3 2024 Ford F-550/Emergency-One 4x4 equipped with a 1250 gpm pump, 300 gallon tank and 20 gallons of foam.



Georgetown Engine 4 AKA "Erie Number 4" is an HME/Ahrens Fox 1500/1000. This rig was on display at the Ham & Bean Supper, which was held in their quarters.



Hopedale Engine 3 2024 Emergency-One Typhoon 1500/750/30 gallons foam.



Hopkinton Engine 1 and Engine 2 both received 2024 Pierce Enforcer models 1500/750/20 gallons of foam.



Lakeville Tower 1 2024 Spartan/Smeal 1500/400/100 ft. mid-mount tower.



Massachusetts Fire Academy Department of Fire Services Ladder 3 2024 KME Severe Service 109 foot rear mount aerial



Tanker 1 2024 International/ Bulldog Dozer 4x4 600/1250/ 30 gallons of foam.



Millis Engine 1 Pierce Enforcer PUC 1500/750.



Norfolk Engine 2 2024 Rosenbauer Commander MP3 1500/1000/30 gallons of foam.



Norfolk Tank 1 2024 International/Pierce 1250/3000.



Tewksbury Engine 1 2023 Pierce Enforcer 1500/1000/20 gallons foam.



Boston EMS Tango 1 and 2 are both 2024 Ford F-550/ First Priority Light Rescue assigned to Special Operations Division.



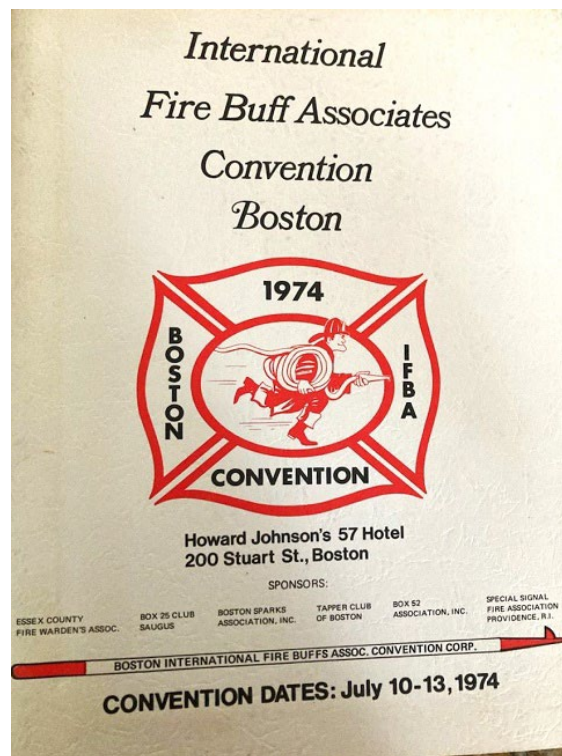
50th Anniversary of the 1974 Boston IFBA Convention

By Editor Frank San Severino

It seems hard to believe that my first introduction to the Buff Clubs of Boston was 50 years ago this July. I was entering my junior year at Don Bosco Technical High School. My knowledge of the Convention was when it was brought up at a meeting of the Middlesex County Fire Wardens.

I was only able to attend the Saturday events in Chelsea and it was a memorable experience and I met many buffs. Far too many of whom have passed on.

In keeping with our 50th anniversary of both Chelsea fires this season, I thought it would be interesting to see the Convention schedule again. Kind of blast from the past. I know many of you were in there.





CONVENTION PROGRAM

TUESDAY, JULY 9, 1974

1500-1800 PRE-REGISTRATION AT BIFBAC REGISTRATION DESK, 6TH FLOOR, '57 HOTEL
1800-2400 IFBA EXECUTIVE BOARD MEETING

WEDNESDAY, JULY 10, 1974

0900-1830 REGISTRATION AT BIFBAC REGISTRATION DESK, 6TH FLOOR, '57 HOTEL
1015 GREETINGS TO REGISTRANTS—HENRY A. BRENNICK, PRESIDENT, BIFBAC,
CONVENTION HOSTS, REGISTRATION AREA
1030-1130 SEMINAR #1—PHOTOGRAPHY, JAMES H. BLOMLEY, BOX 52 ASSOC. And
TAPPER CLUB, NOTED LOCAL FIRE PHOTOGRAPHER
1130-1300 LUNCH, ON YOUR OWN
1300-1400 SEMINAR # 2—ARSON AND FIRE INVESTIGATION, DISTRICT FIRE CHIEF
VINCENT A. BOLGER, JR., BOSTON FIRE DEPARTMENT
1400-1500 SEMINAR #3—RADIO THEORY, RICHARD S. HARRIS, BOSTON SPARKS
ASSOC. AND LOCAL RADIO TECHNICIAN
1500-1900 FREE TIME—DINNER ON YOUR OWN
1900-2100 CONVENTION OPENING CEREMONIES:
REMARKS—MORRIS J. TORF, PRESIDENT,
INTERNATIONAL FIRE BUFF ASSOCIATES
ANNUAL IFBA MEMORIAL SERVICES

MULTI-MEDIA PRESENTATION ON THE HISTORY OF THE FIRE SERVICE—
DAN MACKAY, ADVANCED SAFETY SYSTEMS

2100 BUFF'N IN BOSTON

HOSPITALITY ROOM OPEN ON 6TH FLOOR

OPEN HOUSE AT THE QUARTERS OF THE BOSTON SPARKS
ASSOCIATION AND TAPPER CLUB

THURSDAY, JULY 11, 1974

0900-1200 REGISTRATION AT BIFBAC REGISTRATION DESK, 6TH FLOOR, '57 HOTEL
1030 EMBARK ON AIR CONDITIONED BUSES FOR TOUR OF SELECTED
BOSTON FIRE STATIONS, VISIT TO THE BOSTON FIRE DEPARTMENT
MOON ISLAND TRAINING FACILITY FOR A DISPLAY OF SPECIALIZED
APPARATUS, DRILL TEAM DEMONSTRATION AND LIGHT LUNCHEON
1500 ARRIVE AT FRANCES FARM, REHOBETH, ON BUSES FROM FIRE
ACADEMY, FOR AUTHENTIC NEW ENGLAND STYLE CLAMBAKE,
APPARATUS FROM SOUTHERN MASSACHUSETTS AND PROVIDENCE,
RHODE ISLAND AREA DEPARTMENTS ON DISPLAY
1900 RETURN ARRIVAL BY BUS AT CONVENTION HOTEL
2000 BUFF'N IN BOSTON
HOSPITALITY ROOM OPEN ON 6TH FLOOR
OPEN HOUSE AT THE QUARTERS OF THE BOSTON SPARKS
ASSOCIATION AND TAPPER CLUB



FRIDAY, JULY 12, 1974

- 0900-1200 REGISTRATION AT BIFBAC REGISTRATION, 6TH FLOOR, '57 HOTEL
1000 ANUAL IFBA BUSINESS MEETING IN CONVENTION HALL
GUIDED BUS TOUR OF HISTORICAL SITES AND LUNCHEON
1200 LUNCHEON FOR BUSINESS MEETING DELEGATES AND IFBA OFFICERS ONLY
1500-1830 REGISTRATION AT BIFBAC REGISTRATION, 6TH FLOOR, '57 HOTEL
1500-1900 FREE TIME
1900 EMBARK ON BUSES FOR ATLANTIC AVENUE PIER, BOARD M/V
PROVINCETOWN FOR BOSTON HARBOR MOONLIGHT CRUISE,
BUFFET DINNER AND MUSIC OF TERRY KOEN'S BANJO BAND

SATURDAY, JULY 13, 1974

- 0900-1000 REGISTRATION AT BIFBAC REGISTRATION, 6TH FLOOR, '57 HOTEL
1000 EMBARK ON BUSES FOR VISIT TO LOGAN AIRPORT FIRE DEPARTMENT
FOR DEMONSTRATION OF CRASH EQUIPMENT;
TOUR OF CHELSEA CONFLAGRATION AREA, DISPLAY OF NORTH SHORE
APPARATUS, LUNCHEON AT CHELSEA CENTRAL STATION, PRE-
SENTATION ON CHELSEA CONFLAGRATION BY CHIEF OF DEPART-
MENT, HERBERT C. FOTHERGILL, CHELSEA FIRE DEPARTMENT
1500 RETURN ARRIVAL AT CONVENTION HOTEL
1500-1600 REGISTRATION AT BIFBAC REGISTRATION, 6TH FLOOR, '57 HOTEL
1500-1830 FREE TIME
1830-2000 COCKTAIL HOUR—RECEPTION FOR COMMISSIONER JAMES H. KELLY,
CHIEF OF DEPARTMENT GEORGE H. PAUL, BOSTON
FIRE DEPARTMENT, AND GUEST FIRE DEPARTMENT
OFFICIALS—'57 RESTAURANT BANQUET ROOM
2030-0100 BANQUET —INSTALLATION OF NEWLY ELECTED IFBA OFFICERS;
ENTERTAINMENT BY JIMMY JOYCE AND DANCING TO
MUSIC OF TERRY KOEN



EXTRA! EXTRA! EXTRA!

FIRE DESTROYS FORMER JACOB WIRTH RESTAURANT ON STUART STREET

B.F.D. Sounds Four Alarms on Theater District Blaze!



Photo courtesy of Universal Hub

June 24, 2024

4-148

31-37 Stuart Street

As we were putting the finishing touches on the second section of the Line Box. A four alarm fire destroyed the renovated Jacob Wirth building on Stuart Street.

The fire was an old school downtown fire, that hasn't been seen in over a decade. Many master streams including ladder pipes, big lines and Blitz Guns were used to it knock it down.

I thought as usual, that this would be a pretty straight forward story till I remembered that my parents were regular patrons from the mid-1950's till about 1967ish. So of course I did a little research into the closing of this iconic Boston restaurant.

The fire building was built in 1844 and had the restaurant on the first floor with apartments above. It first opened in 1868 on Elliot Street then moved some years later to the Stuart Street. The location was given Landmark status in 1975 and was the second oldest operating restaurant in the City behind the Union Oyster House.

The trouble for the restaurant started on the night of July 6th when the owner William K. Fitzgerald was one of six people burned in the gasoline tanker roll over on Route 1 in Saugus. He suffered second and third degree burns and was in a medically induced coma. This led to years of falling sales and ultimately file Chapter 11 bankruptcy protection in January of 2018. Sullivan placed the building for sale for \$ 1,025,000, which included all licenses and yes the liquor license valued then at \$ 400,000 was included. Multiple news reports stated that the restaurant closed down in 2018 after a fire in a second floor apartment.

In 2022 the building was purchased and renovations were started with the desire to reopen the Jacob Wirth sometime during 2024.

On Monday evening June 24th Boston Fire Alarm struck box 148 Stuart near Washington Streets for a fire in the restaurant at 37 Stuart St.



Photo courtesy of the BFD

Ladder Company 17 arrived first due and reported heavy fire on the first floor of a three story ordinary construction under construction, District 4 arriving moments later reported he had heavy fire conditions on all floors and attached exposures on the Bravo and Delta sides. C6 Division 1 Deputy Greene arrived and took command with District 4 as operations. The second alarm was ordered. Companies started lines into the building

and were met with heavy fire conditions on the second and third floors. Command ordered the building evacuated and ordered the third alarm. District 6 was ordered to the rear of the building on LaGrange Street and reported that a ladder truck couldn't get in. He ordered 28 ft ground ladders thrown and engine companies to take a Blitz Gun and big line and get it into operation at the rear where most of the fire was located.

Car 6 reported that engines reporting into LaGrange Street were to bring big lines through the garage (Bravo exposure) and get them into operation.



Photo courtesy of the BFD

At the front of the building engines companies were getting Blitz guns and big lines into operation. Tower Ladder 3 was operating its guns down into the inferno.

One of the more interesting radio transmission was to special call Engine Co. 30 to the fire with the second Drone pilot and they were to respond 'Code C'.

The building was heavily damage with estimates of damage reaching three million dollars. The Allout was sounded at 1048 hours on June 25th, the cause of the fire is still under investigation.

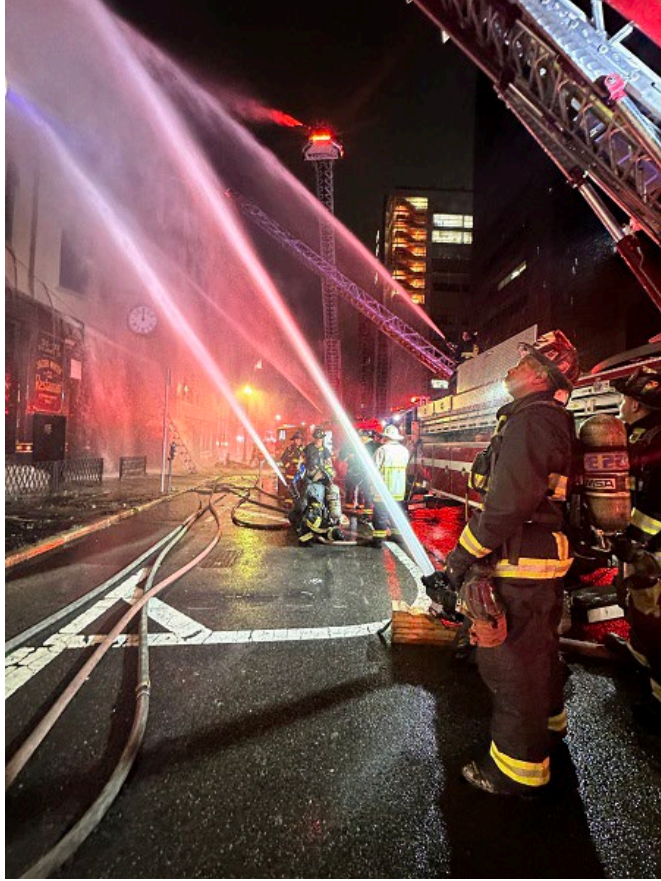


Photo courtesy of the BFD



Detail Companies Engine 5 & Ladder 14. Photo courtesy of WCVB News

Time	Box	Engines	Ladders	Rescue	Chiefs
2248	148	7, 10, 3, 4(RIT)	17, TL-3	1	Div. 1, Dist. 4
2252			24, 15(RIT)		Dist. 3 (RIT), H1
2254	2-148	22, 33, 39	18, 1		Dist. 6, Dist. 8
2257	3-148	14, 8	4		C1
2304	4-148	37, 50, 30			K1

Engine 30 special called Code C for 2nd Drone Pilot.

Special thanks to honorary member Paul Christian and Broadcastify in preparing this report.


The Menu Unknown Decade
Courtesy of the Culinary Institute of America



JACOB WIRTH CO.

Restaurant

ESTABLISHED 1848




LIQUOR CONTROL ACT

SECTION 34A. Whoever, being a minor, makes a false statement as to his age in order to procure a sale or delivery of alcoholic beverages or alcohol, either for his own use or for the use of another, and whoever knowingly makes a false statement as to the age of a minor in order to procure a sale or delivery of such beverages or alcohol to such minor, either for the use of the minor or for the use of some other person, and whoever induces a minor to make a false statement as to his age in order to procure a sale or delivery of such beverages or alcohol to such minor, shall be punished by a fine of not less than ten nor more than one hundred dollars.

33-37 STUART STREET
 Formerly Eliot Street
BOSTON

RESTAURANT TELEPHONE
DEVONSHIRE 8-7194

Not Responsible for Hats, Coats, Umbrellas or Other Articles

AIR CONDITIONED FOR YOUR COMFORT

SANDWICHES

Ham and Swiss Cheese..... 95	Hot Corned Beef..... 1.10
Cold Corned Beef..... 75	Smoked Salmon, Bermuda Onion with Cream Cheese..... 1.10
Cold Corned Beef and Swiss Cheese..... 95	Liverwurst..... 65
Cold Sliced Turkey, Lettuce and Tomato..... 1.35	Imported Sardine..... 75
Cold Sliced Turkey, Ham and Lettuce..... 1.45	Tongue and Blood..... 85
Smoked Beef Tongue..... 85	Hoghead Cheese..... 85
Ham..... 60	Swiss Cheese..... 55
Imported Salami..... 65	Westphalian Ham..... 1.25
	Westphalian Ham and Turkey..... 1.50

Served on Rye, French, White Bread or Roll
 Extra Bread with all Sandwiches 15c
 Pretzels 35c

JACOB WIRTH'S MILWAUKEE SPECIALS

Tea Wurst and Potato Salad.....	1.95
Goose Liverwurst and Potato Salad.....	1.95
Braunschweiger Liverwurst and Potato Salad.....	1.95
Thuringer Bloodwurst and Potato Salad.....	1.95
German Head Cheese and Potato Salad.....	1.95
Milwaukee Combination and Potato Salad.....	2.25

COLD DISHES

Cold Smoked Ham, Potato Salad, Cole Slaw, Sliced Tomatoes.....	2.25
Cold Smoked Ham, Swiss Cheese, Potato Salad, Cole Slaw, Sliced Tomatoes.....	2.25
Cold Sliced Turkey, Potato Salad, Cole Slaw, Sliced Tomatoes.....	2.35
Cold Sliced Turkey and Ham, Potato Salad, Cole Slaw, Sliced Tomatoes.....	2.45
Cold Corned Beef, Potato Salad, Pickled Beets.....	2.40
Fresh Lobster Salad with Potato Chips.....	2.85
Fresh Shrimp Salad with Potato Chips.....	2.25
Fresh Vegetable Salad, Cottage Cheese, Smoked Salmon, Potato Chips.....	1.95
Cold Pickled Lamb's Tongue, Potato Salad, Sliced Tomatoes.....	1.75
Cold Beef Tongue, Potato Salad, Pickled Beets.....	2.40
Cold Smoked Tongue, Sliced Turkey, Potato Salad, Pickled Beets, Sliced Tomatoes.....	2.50
Cold Corned Beef, Sliced Turkey, Cold Tongue, Potato Salad, Sliced Tomatoes.....	2.50
Imported Westphalian Ham, Potato Salad, Cole Slaw.....	2.75
Imported Westphalian Ham, Sliced Turkey, Potato Salad, Cole Slaw.....	2.75
Imported Crabmeat Salad, Sliced Tomatoes, Potato Chips.....	2.35
Salmon Salad, Sliced Tomatoes, Potato Chips.....	1.60
Tuna Fish Salad, Sliced Tomatoes, Potato Chips.....	1.60
Vegetable Salad with Imported Sardines, Potato Chips.....	1.65
Vegetable Salad with Anchovies.....	1.65
Vegetable Salad.....	Small .90 Large 1.25
Vegetable Salad with Cottage Cheese.....	1.35

CHEESE

American..... 50	Camembert..... 50
Swiss Cheese..... 50	Limburger..... 50
Liederkranz..... 50	Roquefort..... 60
Cream..... 50	Muenster..... 50

Crackers

LIQUOR LIST ON BACK COVER

Cigars at Cashier's Booth

MASSACHUSETTS OLD AGE TAX 5c

APPETIZERS

Shrimp Cocktail	95	Fresh Lobster Cocktail	1.50
Tomato Juice	35	Sauerkraut Juice	35
Half and Half 35			
Bismarck Herring, Sliced Onion			65
Marinated Herring			80
Anchovies on Lettuce	85	Herring in Tomato Sauce	65
Imported Sardines with Sliced Onion			85
Head Cheese, Vinaigrette			95

SOUPS

Pea Soup	order 60	cup 35
Beef Bouillon	order 60	cup 35
Pea Soup with Sliced Frankfurt or Bacon		95

ENTREES: A LA CARTE

SAUERBRATEN with Buttered Noodles or Red Cabbage	2.50
OLD-FASHIONED NEW ENGLAND BOILED DINNER	2.40
ROAST FRESH HAM, Apple Sauce, Vegetable and Potato	2.35
ROAST RIB OF BEEF, Dish Gravy, Vegetable and Potato	3.15
DOUBLE THICK SLICE " " "	4.25
ROAST STUFFED TURKEY, Giblet Gravy, Mashed Potatoes, Vegetable, Cranberry Sauce	2.35
PIG'S KNUCKLE, Sauerkraut, Boiled Potato	2.25
BRATWURST and Shell Beans or Sauerkraut	1.55
KNACKWURST and Potato Salad or Sauerkraut	1.55
FRANKFURTS and Potato Salad or Sauerkraut	1.15
IMPORTED HOLLAND FRANKFURTS and Potato Salad or Sauerkraut	1.75
BOILED BACON, Sauerkraut and Potato	1.95
SMOKED HAM, Sauerkraut and Potato	2.35
POT OF BOSTON BAKED BEANS and FRANKFURTS	1.45
BOILED SPARERIBS, Sauerkraut and Boiled Potato	2.25
SLICED BACON, KNACKWURST, Sauerkraut, Boiled Potato	1.95
SMOKED HAM, KNACKWURST, Sauerkraut, Boiled Potato	1.95

VEGETABLES IN SEASON

Sliced Tomatoes	60	Pickled Beets	45
Sliced Cucumbers	60	Stringless Beans	35
Shell Beans	40	Potato Salad	40
Sauerkraut	40	Mashed Potatoes	30
Stewed Tomatoes	35	Sliced Onion	30
Raw Sauerkraut	35	Boiled Potato	30
Red Cabbage	45	Dill Pickles	35
Spinach	40	Cole Slaw	35

DESSERTS

Assorted Pies in Season 35-40			
Turnovers	35	Apple Cake	35
Cheese Cake	40	Raisin Cake	25
Apple Strudel	35	Ice Cream	50
Apple Streussel Kuchen	35	Sultana Roll, Claret Sauce	35
Melon in Season		Spumoni	35
Fresh Strawberry Shortcake (in Season)			
Ice Cream with above order 20c extra			

BEVERAGES

Coffee	15	Milk in Bottle	20
Tea	15	Iced Coffee	25
Sanka	20	Iced Tea	25
Postum	20	Tonics	20

Cigars at Cashier's Booth

MASSACHUSETTS OLD AGE TAX 5%

BEERS ON DRAUGHT

JAKE WIRTH'S SPECIAL DARK BEER	Glass 20	Seidel 25
DAWSON'S LIGHT	Glass 20	Seidel 25

APERITIFS

Sweet Vermouth	.45	Dry Vermouth	.45	Dubonnet	.55
Imported Vermouth, Dry	.55	Imported Vermouth, Sweet	.55		

WINES

Port, Sherry, Muscatel, Saaterne, Claret, Burgundy or Dry Sherry	per glass .45	
IMPORTED : Rhine .40	Duff Gordon Sherry .40	Cockburn Smiths Port .60

COCKTAILS AND MIXED DRINKS

Martini	.75	Cuba Libre	.75	Bacardi	.75
Gibson	.75	Grasshopper	.90	Stinger	.85
Manhattan	.75	Old Fashioned	.80	Daiquiri	.75
Vodka Martini	.75	Orange Blossom	.80	Side Car	.80
Scotch Old-Fashioned	.90	Screwdriver	.85	Pink Lady	.80
Whiskey Sour	.90	Alexander Gin	.80	Ward Eight	.80
Southern Comfort	.85	Alexander Brandy	.90	Rob Roy	.90

CANADIAN WHISKEY

Schenley Canadian	.80	Seagram's V.O.	.80	Canadian Club	.80
-------------------	-----	----------------	-----	---------------	-----

RYE AND BOURBON

Seagram's 7 Crown	.70	Fleischmann's	.70	Old Overholt (Bonded)	.85
Schenley's Black	.70	S. S. Pierce Red Label	.70	Old Taylor	.85
Four Roses	.70	S. S. Pierce No. 6	.65	L. W. Harper	.85
Old Thompson	.65	Old Forester (Bonded)	.85	Old Fitzgerald	.85
S. S. Pierce Round Table	.70	Old Grand-Dad	.85	Jack Daniels	.85

SCOTCH AND IRISH WHISKEY

Johnny Walker Black	.95	Glen Garry	.80	White Horse	.80
Johnny Walker Red	.80	John Jameson	.85	Black and White	.80
Tencher's	.80	S. S. Pierce (12 yrs.)	.95	Vat 69	.80
Dewar	.80	Ballantine's	.85	Cutty Sark	.80
Bell's	.80	Haig & Haig	.80	Haig & Haig Pinch Pot.	.85
Bushmill	.85	Martin's V.V.O.	.80	J. & B.	.80
King's Ransom	.95			Old Rarley	.85

BRANDY

	Pony	Glass		Pony	Glass
Hennessy 3 Star	.75	.95	S. S. Pierce Brandy	.65	.80
Martell Brandy	.75	.95	Laird's Apple Brandy	.65	.80
Meixa	.75	.95	Blackberry Brandy	.65	.80
Asbach Uralt	.75	.95			

RUMS

Bacardi Porto Rican (L.L. & Dk.)	.75	S. S. Pierce Gin	.65
Bacardi Cubes (L.L. & Dk.)	.80	Gordon's	.75
Myer's	.80	Lloyd's	.75
New England Rum	.70	Booth's House of Lords Imp.	.85
		Beefeaters	.85
		Stee Gin	.70
		Vodka	.65
		Vodka 100 Proof	.75

GINS

COLLINS

Stee Gin Collins	.80		
Rum Collins	.80		
Tom Collins	.80		
Whiskey Collins	.80		

RICKEYS

Gin	.80
Rum	.80

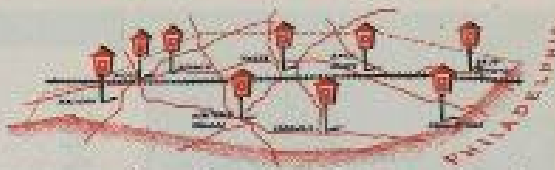
CORDIALS

Kummel	.75	Benedictine—D.O.M.	.75
Crene de Menthe	.75	Benedictine and Brandy	.75
Triple Sec	.75	Anisette	.75
Crene de Cacao	.75	Apricot	.75
Cherry Heering	.75	Drumhuie	.75
Kirschwasser	.75	Cointreau	.75

Cigars at Cashier's Booth

Right out Philadelphia's Main Line

MACKS handle the important assignments



From Philadelphia to Malvern—right out Philadelphia's "Main Line"—wherever they want, Mack's take this action, for there are only two Mack apparatus among the area's fire companies.

There's one lingering reason why this is so: Philadelphia's territory never so hands off Mack's. That reason is performance... matchless performance based on Mack's dynamic, California quality.

There are outstanding Macks for your department, as well, from the wide selection of Mack models you can have equipped or standard units... conventional or automatic transmissions... standard two-stage pumps or the new Uni-Control Hydraulic pump... hand-driven or air-fired series... the fact is, they're all great. Moreover, Mack controls the performance of its fire-fighting vehicles by making more of its own

components than anyone else in the industry, and to the highest standards anywhere, Mack Fire Apparatus, Sidney, Ohio, is Canada's Mack Trucks of Canada, Ltd.

MACK
FIRST NAME FOR
FIRE APPARATUS



BRYN MAWR MODERNIZES WITH MACK When Mack's got the "Main Line" assignment in this 1000-gal. hand-crank, air-primed pumper, 250 hp. Mack Thermodyne® engine, 300-gallon tender tank, air brakes, and 100-gal. water tank, 17' long suction hose, 100' long hose for the straddle. One company everywhere. One Mack that found that it can have the finest custom-built apparatus in the world at cost-price prices—without loss of the life of the equipment.

COMPLETE LINE OF PUMPS—ROR 20-1200 GPM • 20' AND MORE WATERS • AERIALS 80' TO 160' • COMBINATION LADDER TRUCKS