



THE LINE BOX

Volume 11, Number2

In This Issue

- Boston Multiples
- Boston News
- Metro-Fire News
- Apparatus Deliveries
- Winter in New England
- DFS New TOMS Units
- IFBA Dallas Convention Report
- Members Submission

Editors

Frank San Severino

Mark Roche

John Galla

Michael Boynton

Contact Us

<http://www.box52.org>

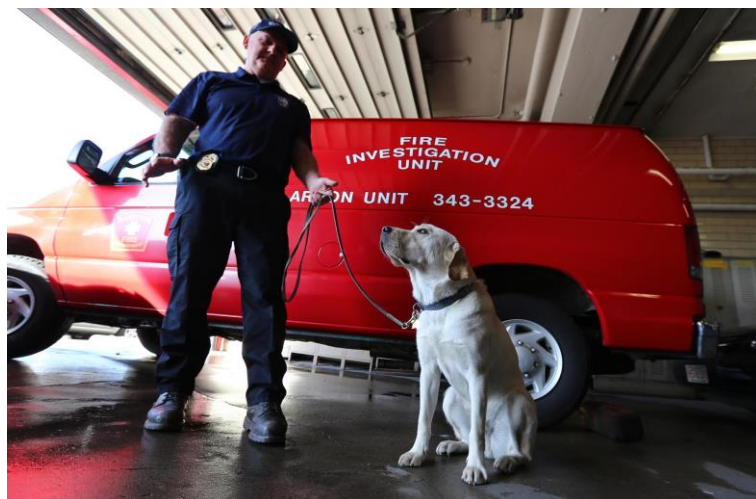
thelinebox@hotmail.com

Boston Multiple Alarms October – November 2014

Date	Box	District	Address	Building Type
10/10	5-175	D-7	104 Winthrop St.	3.5 story wdfrm duplex
11/02	4-232	D-4	877 Beacon St.	4 story ordinary comm..
11/16	3-155	D-4	64 Rutland St	4 story Brownstone apts
11/19	2-3315	D-8	22 Lyndhurst St.	2.5 story wdfrm dwelling
11/20	2-2889	D-12	81 Caledonian St	1.5 story wdfrm dwelling

B.F.D News

- A new H-2 “Special Unit” has been placed in service. The unit is on a Ford F-550 chassis with four wheel drive, the body work was done by KME. The unit has a Light Tower and a 55 gallon foam cell. The unit replaces a well worn 1992 Ford/Emergency One unit. The new unit is quartered with Engine Co. 3 on Harrison Avenue.
- On Friday December 5th, 2014 the Boston Fire Department welcomed the newest member of the Arson Squad. Keegan, a one year old yellow Lab that was a gift from the Conn. State Police. Keegan is assigned to Fire Lt. Thomas Murray of the Arson Squad’s Major Case Unit. Keegan is the first dog for the BFD since the 1990’s when Shuttle, a black Lab retired with his handler. Keegan is trained to detect some 17 common accelerants and can pick up amounts as small as 2 micro liters accelerants.



Keegan and Lt. Murray. Photo by Boston Globe Pat Greenhouse



Fire blows out the roof of 22 Lyndhurst St. on Nov. 19, two alarms box 3315
Photo courtesy of the Boston Fire Department



Boston H-2, photo by M. Boynton

METRO-FIRE NEWS

- Cambridge: For the first time since 1977 the CFD no longer operates any apparatus equipped with a Squrt. Engine 8's 1998 Pierce Saber Squrt has been placed out of service and is for sale by bid. Engine 2's 2002 Pierce Saber has been transferred to Engine 8. Engine 2 is operating with the re-built 2013 Pierce PUC that was re-built after being damaged. (*Look for a future Line Box article on the Metro Fire Sqrts –ed*)
- Chelsea: is going to re-open the old Engine 5 station on Everett Ave and place Engine 4 back in-service to cover the construction project on the Washington Ave Bridge. The company will be operated 24 hours a day and will be manned by overtime crews. It will be placed in Service at 0800 December 1st.
- Needham: Deputy Chief Dennis Condon has been promoted to Chief of Department.

OUTSIDE THE DISTRICT NEWS

- Lawrence Ladder 5's 1992 Emergency One/Snorkel has been placed out of service for mechanical reasons and the City is trying to get funds for a new rig.
- Westborough: On November 7th the W.F.D moved into their newly built Headquarters Station.



Quincy's 3 front line Truck Companies posed for Member Michael Worley's camera

APPARATUS NEWS – BOX 52

By Michael Boynton

To all Box 52 Members, let me begin this abbreviated update by wishing you and your families a belated Happy Thanksgiving and a very Merry Christmas. It is perhaps the most special time of the year, and here is hoping

that Santa will be good to one and all! As for Metro Boston departments, several have already received early apparatus gifts, including Bedford, Everett, Medford, Revere, Westwood, and of course Boston. Meanwhile, Santa's elves are putting the finishing touches on a number of other new rigs, trucks destined for Belmont,

Boston, Walpole and Wellesley just to name a few. It is expected that Belmont FD should have their new

Ladder 1 and Engine 1 under the tree before December comes to a close. You can be certain that we will be monitoring the happenings as we close 2014 and ring in 2015.

DELIVERIES & NEWS

MetroFire

Everett – NEW Engines 1 & 2 – 2014 Pierce Dash CF PUC 1500/500/40F

Medford – NEW Engines 1 & 2 – 2014 Pierce Arrow XTs 1250/750

Revere – NEW Engines 1 & 4 – 2014 Pierce Arrow XTs 1250/750/30F

Outside Of Metro Boston

Bedford – NEW Ladder 1 – 2014 KME Severe Service 2000/500 109' RMA

Edgartown – NEW Engine 221 – 2014 KME Predator PRO 1500/700/15A/30B

Fall River – “New” Engine 21 – 1994 E-One Protector 1250/750/50F (*former Foxborough Engine 21*)

Great Barrington – NEW Ladder 1 – 2014 KME Severe Service 2000/300 100' MMA Tower

Marshfield – NEW Engine 2 – 2014 E-One Typhoon 1250/500/30B

Newbury Protection #2 – “New” Ladder 3 – 2000 Pierce Dash 1500/500 75' RMA (*former Brookline Engine 4*)

Westport – “New” Engine 4 – 1988 Spartan/Maxim 1500/1000 (*former Dartmouth District 3 Engine 4*)

Westwood – NEW Ladder 2 – 2014 Ferrara Igniter 1500/500/20A 77' RMA



Bedford Ladder 1



Rigs from Martha's Vineyard, most of us don't see to often. This is Edgartown's Engine 221.



Newbury "Protection No. 2" Ladder 3



Westport Engine 4

A Box 52 Member who is a retired firefighter submitted this for the enjoyment of our readers. At the Members request I will not reveal who the author is.. Editor

Winter in New England!

Let me tell you young guys what it is like before closed cabs, full PPG, rehab buses! Why back in the day.....

- Alb Company rubber turnout coats with a thin flannel liner that would barely keep you warm on an early May morning, so you wore a "beach jacket" or an "engineer coat" under it and then you were so bulky you could barely move your arms.
- Carins leather helmets with flannel ear covers, that was better than nothing!
- Firehouse doors made of wood and glass. That when the wind hit them they rattled and the draft was bone chilling.
- Hissing apparatus floor radiators with lines of woolen mittens on them to dry. Boy, they were warm to, until they got wet, then they were sponges!
- Boots up on the running boards, keep the boots warm and let's not forget heavy boot socks to keep the tootsies warm!
- How about having to brush the slush off the wheels when you got back to quarters with hot water and a brush.
- If you used the booster line, then you had a special air nozzle you put on to blow the water out of the line to prevent freezing.
- Riding the back step and tucking yourself in to the corner and the hose bed to stay out of the wind!

- And the words you just hated to hear “put the chains on”! Then the dance of the “Chains” starts. The rig is pulled forward, then you lug a huge wooden thick ramp out and place it under where you hoped the inner rear wheel would ride up so you could get the chains on the outer tire. The chains were laid out on the floor after being taken down from their hanging spot on the wall. Then as you knelt by the tire hoping the rig didn’t slide off the block, or your fingers got caught under the tire. Close the links on the chain, pull the rig forward off the ramp, reposition to the other wheel and repeat. If your crew was good, you could be back at the kitchen table for coffee in about a half hour!



Black Fleece Lined



CAIRNS ATTACHED EARLAPS

The earlaps in CAIRNS helmets are an integral part of the lining. They fold neatly inside when not in use, are always available when needed.



BFD Engine 1 1962 Ward La France, with the chains on. Photo by Member F. San Severino

Division of Fire Services New TOM's Units

The Massachusetts Department of Fire Services has just placed seven new TOM's (Technical Operations Modules) Haz-Mat trucks in service with the DFS statewide Haz-Mat teams. The rig is a 2014 Spartan chassis with a Farber body. TOM's units are part of the two pieces Haz-Mat response rigs for each team, the other is the ORU (Operational Response Unit). The ORU's are the equipment truck, and 10 new ones are also on order.



Photo by Member M. Boynton



Member William Noonan grabbed this photo of Engine 3's 2013 KME hard at work on Beacon St.

Dallas IFBA Convention

By Richard Cutts

This years IFBA Convention was held in Dallas Texas September 3rd – 6th, with Box 52 represented by four members and one applicant. The Convention was hosted by Box 4 Dallas Fire Buffs, with great support from the DFD and other area Departments. September third started with the opening ceremonies and general business meeting. That afternoon there were three seminars presented by local Chiefs. One seminar was on the Emergency Medical Services of the Dallas Department, the second seminar was on Special Operations and a third seminar on the many challenges faced by the DFW Airport Public Safety Department. After the seminars, attendees boarded busses for the evening's activities. First was a stop at the Dallas Fire Museum, then to the Dallas Firefighter's Union Hall for a catered dinner featuring Babe's famous fried chicken and chicken fried steak.

Thursday began with a tour of the DFD Training Academy for demonstrations including air operations, EMS and Wildland firefighting. Following a boxed lunch at the Academy, buses took the attendees to Dealy Plaza site of the JFK assassination and toured the 6th Floor Museum in the former Texas School Book Depository building. After touring the Museum the group was bussed to the Texas Fire Museum for dinner.

Friday we returned to the Fire Academy for more demonstrations that included swift water rescue, hazmat and USAR. Next up was a tour of the shops. The group returned to the hotel during the hottest part of the day to rest up for the evening activities. As the sunset we headed for a BBQ dinner at the world famous Billy Bob's in Fort Worth. Billy Bob's claim to fame is that it is the world's largest Honkey Tonk holding over a 1000 people at multiple showrooms and bars. The group then walked one block to the only indoor rodeo which was a first for many of those in attendance.

Saturday we were off to DFW Airport for a fantastic show that featured visits to the emergency operations center, indoor training facility and visits to three of the many fire stations on airport property. The highlight for many of us was a demonstration of the computer generated graphics system designed to display the interior and exterior of most of the aircraft in use throughout the world. Lunch was followed by a display of airport and area fire apparatus and a live burn of an aircraft mock up at the outdoor training facility.

The closing banquet was held at the hotel with 13 members of the Chief's staff in attendance. Former Region One Vice President and Box 52 member Ken Beliveau was sworn in as IFBA President. The Indianapolis Fire Buffs were awarded the web site of the year and Ira Cohen was presented with the Fire Buff of the Year Award. All agreed that it was a great convention!

All photos by Member Robert Fitz Jr.



Eng. 25 2011 Spartan/Crimson 1500/500



Truck 3 2014 Spartan/ERV 100' tiller



DFW EZ 12 2007 Oshkosh Striker 4500



DFW Haz-Mat Rescue 1 2007 Pierce Lance

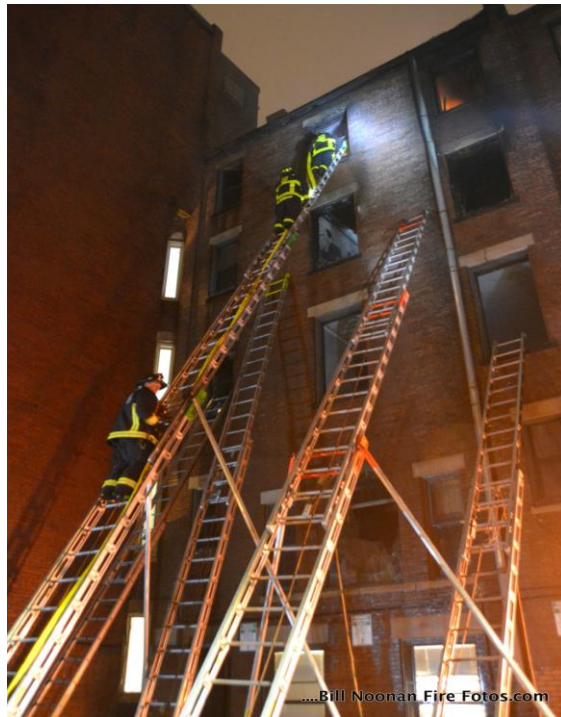


Truck 57 1957 Pirsch 100 ft tiller



Revere and Mutual Aid Companies work hard to bring this 3-alarm fire under control on Nov. 21
For 924 Winthrop St. Photo by Member M. Worley

Boston has long been known for its laddering of fire buildings. It has been a few years since the last 'good' laddering job. Member Bill Noonan was on hand at the fourth alarm Box 232 for 877 Beacon St. and grabbed these shots.....



Rear of the building, five ground ladders thrown!



Front of the building with 3 aerials working.

Member Richard Somerville sent along some shots for our enjoyment!



September, Scarborough, ME and mutual aid companies are hard at work at a multiple alarm fire in an Office park development on U.S. Route 1



Newton Captain and Box 52 Member Mark Roche has been transferred to the LA County Fire Dept. He has been assigned as the Tool Placement and Clean Tire Officer. The Armor All Company has dispatched two 30,000 gallon rail tank cars to the LA County FD Shops for use by Capt. Roche!
Member M. Boynton photo

The Staff of the Line Box would like to thank the Members for their continued support of our efforts. So thank you, and please keep your submissions coming!

Here is our gift to our readers. A video of the FDNY early radio channel WNYF testing with the fireboat fleet.

https://www.youtube.com/watch?v=qnMs_j81rVg

